

2 - 2015 24 STREET SW, CALGARY, AB

MAIN - 576.19 Sq.ft. / 53.53 m2

UPPER - 544.01 Sq.ft. / 50.54 m2

RMS TOTAL - 1120.20 Sq.ft. / 104.07 m2

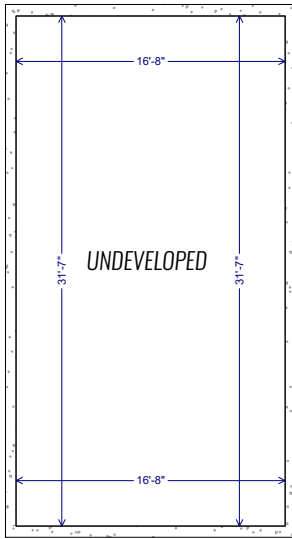
BASEMENT - 526.39 Sq.ft. / 48.90 m2

*FINISHED TOTAL - UNDEVELOPED

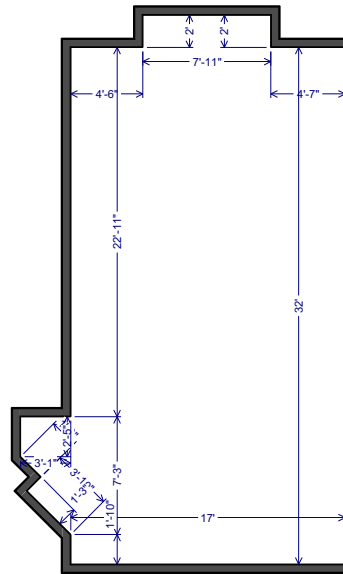
TEAM PENLEY MCNAUGHTON
RE/MAX REAL ESTATE (CENTRAL)
403.283.7113

ATTACHED CONDOMINIUM

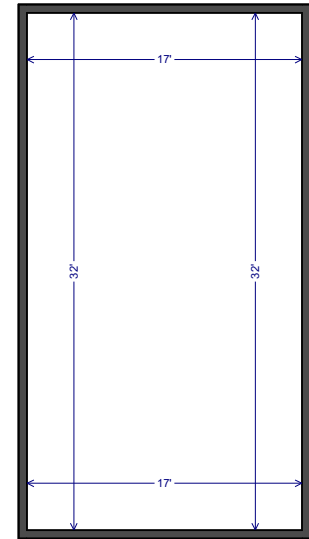
*RECA RMS MEASUREMENTS ARE TAKEN PAINT TO PAINT



BASEMENT



MAIN LEVEL



UPPER LEVEL